

How to update the controller firmware to Rev J2

General information

A product firmware of a FAULHABER MC is denoted by a single letter. As of now the current version in production is revision I.

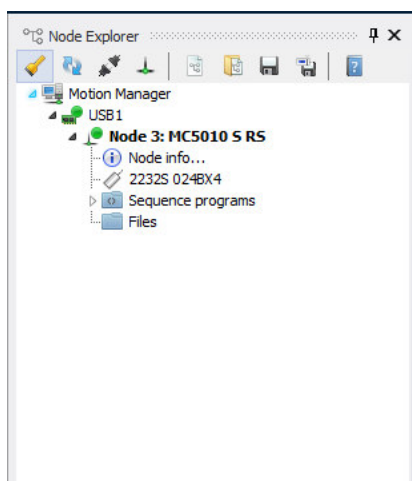
A beta-version is denoted by the letter of the upcoming version plus a number which counts the sequence of the beta-version. So the J2 here denotes the second test-release of the upcoming revision J.

While we do have a though test procedure for the product releases, the betas usually have not been tested completely. We did of course test the changed parts, but it's no formal full test.

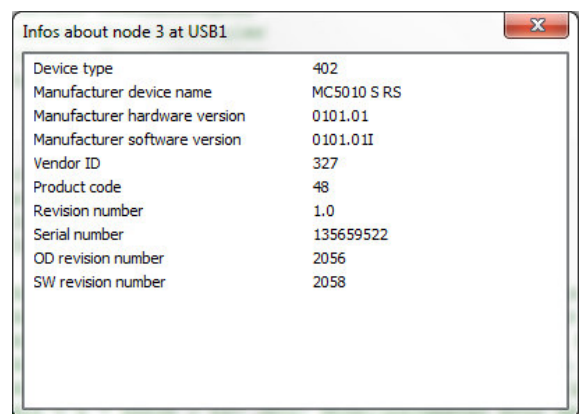
So the purpose of the beta-version mainly is to support new features or fixes for an early test within your application. In case of questions please contact our MCSupport@Faulhaber.com.

Update procedure

Before starting the update you might want to check your current version using the Node info in the Node Explorer.

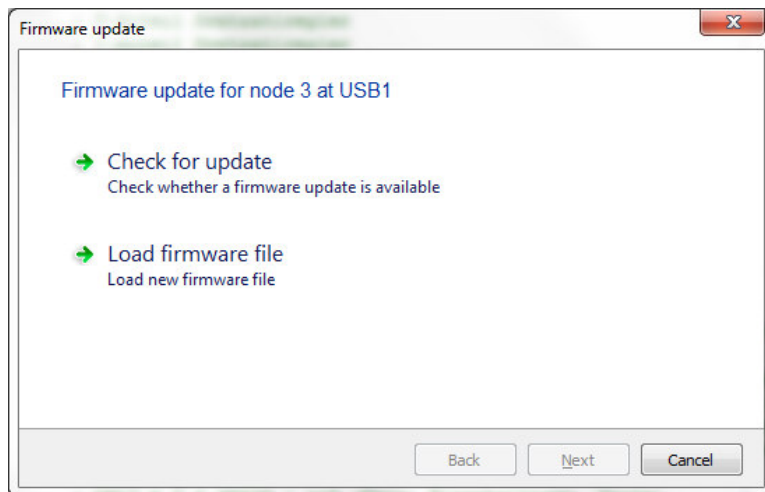


The Node Explorer will list the name of the connected controller.



The installed firmware-version can be checked using the Node info

The FAULHABER MotionManager allows for in field updates via its Extras menu.



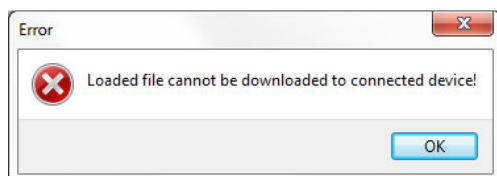
There are two update options:

- Check, whether there is a released firmware update for your device.
- Load a given firmware file manually

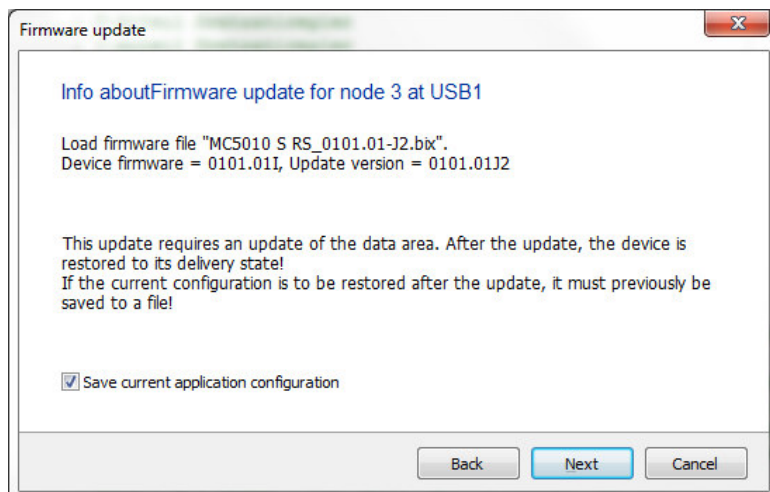
If you want to test a beta version you will need to use the second option. So you need to select the fitting firmware archive for your controller.

The complete set of firmware archives for the different controllers is stored in the bix sub-directory of the firmware archive.

If you want to test a beta version you will need to use the second option. So you need to select the fitting firmware archive for your controller. In case of a non-compatible firmware version an error message will be displayed:

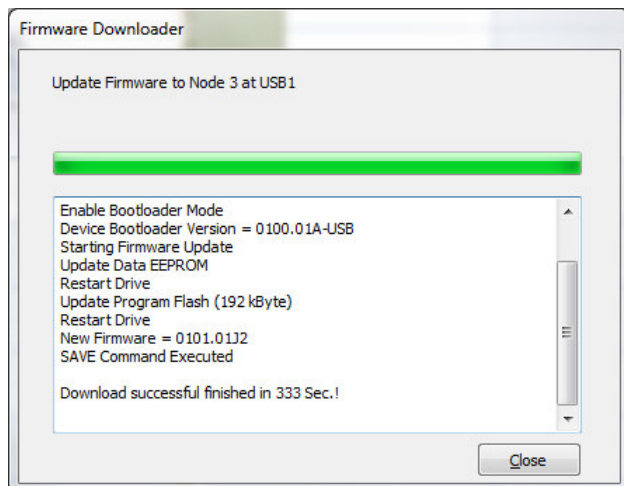


Otherwise you will be asked to start the download. There is an option to store your current configuration before starting the update. The MotionManager will try to restore this configuration after the update.

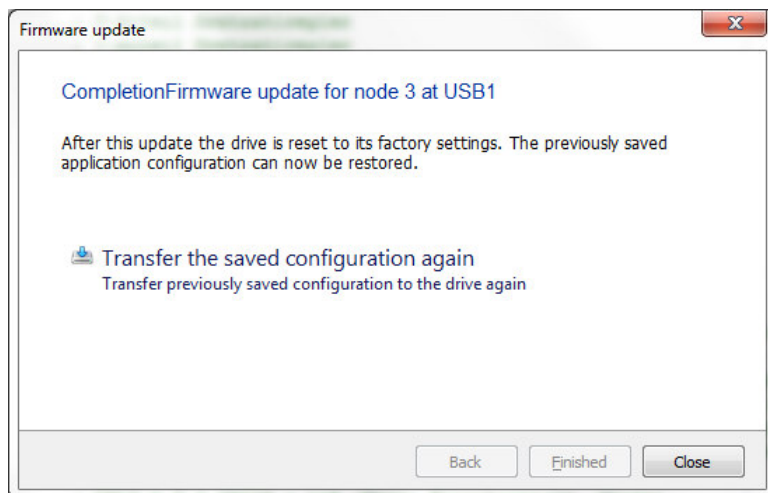


Click Next to start the update.

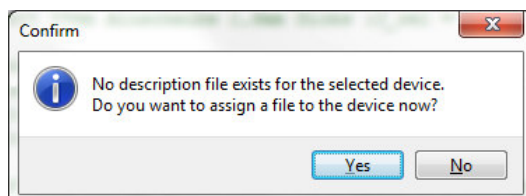
After some time the update itself is finished.



The MotionManager will offer to restore the saved configuration. If you want to, press at the download button. Otherwise select close.



After the update the controller will be identified having a newer firmware version – here J2. The MotionManager won't have the correct controller description file. So you will have to assign one. The description files are stored in the xdd sub-directory of the firmware archive.



Additional actions for a EtherCAT version

Most likely your master will need an appropriate description file too. They are collected in the XML sub-directory of the firmware archive. Additionally the EEPROM of the EtherCAT slave controller needs to be updated to reflect the correct revision. That's possible only via the EtherCAT connection to the slave. So it has to be done via the master. This might be checked by some masters. So after having added the .xml description files to your master you should be able to update the EEPROM contents directly using your master.

For details check our AppNote AN 154 - Updating EtherCAT ESI EEPROM.